



**Arkansas Adult Learning Resource Center**  
 801 S. Louisiana  
 Little Rock, AR 72201  
 Phone: 800-832-6242  
 501-907-2490  
<http://www.aalrc.org>

# Adult Learning Network

*The Adult Learning Network is a quarterly publication of the AALRC.*

The Arkansas Adult Learning Resource Center provides equal access to all programs and activities.

## Message of Encouragement from the AALRC

*With the growing spread of the new corona virus (COVID-19), we know this is a difficult time for many, and we're committed to continued support for programs as needed. We're making some changes with guidance from state leadership to support you during this time, and we're working behind the scenes to find more ways so we can make sure you have access to all resources, tools and knowledge needed for your adult education program in order to serve your students. The AALRC team is teleworking for now, but we are available to assist you during our regular business hours via email and phone.*

*First and foremost, we encourage all of you to vet information carefully before making decisions. The best sources of accurate and timely information are: <https://www.healthy.arkansas.gov/programs-services/topics/novel-coronavirus?qa=2.110451269.1314344362.1584375525-1062241275.1538573667>*

## AALRC Moving to New Location

The AALRC is excited to announce that our office is moving. The move is scheduled for the last two weeks of May 2020. AALRC will be located at 124 W. Capitol in Little Rock. The new office is three blocks north of our current location. We will have the entire 10<sup>th</sup> floor for offices, library, and training space.

There will be several changes you will notice as you come to the new office. Immediately noticeable is that parking will be very different. Visitors won't have to wonder if they will get a parking spot. There is plenty of parking for every visitor, even on busy days. There is a parking deck with valet parking only. You will receive a ticket that you will need to bring it to the AALRC offices with you. Staff will validate your parking ticket. *Please know that they do not accept dooly trucks and the height limit is 6ft 6in for all vehicles entering the deck.* Visitors may also utilize street parking. However, this is all metered parking that would be your responsibility.

There are several amenities that will be available in the new location. There is a coffee shop and cafe on the 1<sup>st</sup> floor of the building. There are break rooms and vending machines on the 8<sup>th</sup> and 16<sup>th</sup> floors as well. I think all of you will be pleased with the new training environment.



The AALRC staff is working diligently to make this a smooth transition. You can click the following link for directions: <https://goo.gl/maps/n0d3n> Please feel free to contact the AALRC if you have any questions or need help finding the new location.

**AALRC**  
**124 West Capitol, 10<sup>th</sup> Floor**  
**Suite 1000**  
**One Union Plaza**  
**Little Rock, AR 72201**

*Calendar*  
*All events are at the AALRC unless otherwise noted.*



Professional Development Events:

**ALL EVENTS ARE TENTATIVE AND SUBJECT TO CHANGE.  
 PLEASE CHECK WITH US BEFORE ATTENDING.**



**April 2020**

- 2<sup>nd</sup> - 3<sup>rd</sup> CSP (Day 2 and 3)
- 22<sup>nd</sup> GED Top 25 Graduation Celebration  
 (9:30 AM - 12:00 noon) - VIRTUAL
- 22<sup>th</sup> - 24<sup>th</sup> Spring Admin. Meeting - Session ID: 388636 - VIRTUAL
- 28<sup>th</sup> Career Exploration - Session ID: 388626
- 30<sup>th</sup> - May 1<sup>st</sup> WAGE Planning  
 LD Comp

**May 2020**

- 1<sup>st</sup> ALA Board Meeting
- 5<sup>th</sup> - 6<sup>th</sup> Mentor/Leader Workshop
- 8<sup>th</sup> CSP (Day 4)
- 11<sup>th</sup> - 12<sup>th</sup> WIOA Partners' Meeting - CANCELED
- 14<sup>th</sup> - 15<sup>th</sup> ALA Annual Training Conference
- 15<sup>th</sup> ALA Annual Lunch
- 25<sup>th</sup> Memorial Day (closed)

**June 2020**

- 4<sup>th</sup> Central Arkansas GED Graduation at Pulaski Academy Connor Performing Arts Center

**Please mark your calendars for these summer events:**

ESL Institute - July 21<sup>st</sup> - 23<sup>rd</sup>, 2020 at Homewood Suites, Little Rock

Teacher Summit - July 28<sup>th</sup> - 29<sup>th</sup>, 2020 at Embassy Suites, Little Rock



*Governor  
 Asa  
 Hutchinson*

*AR Department  
 of Commerce*

*Mike Preston,  
 Director*

*AR Division of  
 Workforce Services*

*Dr. Charisse  
 Childers, Director*

*Adult Education  
 Section*

*Dr. Trenia Miles,  
 Director*

*AR Rehabilitation  
 Services*

*Alan McClain,  
 Director*

*Division of  
 Services for the Blind*

*Dr. Cassandra Stokes,  
 Director*

*COABE 2020 Election*

Dear Members,

We have one of our own running for National office!! Please see the letter from Debbie below, and be prepared to show support. Last chance to vote will be **Monday, April 6<sup>th</sup>**!

**Vote Now**

Vote by clicking the link below (when you read the newsletter online) or copying the link into your web browser. Thank you in advance!

<https://www.surveymonkey.com/r/COABE2020Ballot>

Dear Colleagues,

*I have submitted my name to COABE for Vice-President in charge of membership. I have been working with COABE for the last five years as Secretary and currently I serve as Vice-President of membership.*

*I believe in their advocacy for adult education across the nation. I am honored to have been chosen to be a part of the future of adult education and those who support it.*

*Your vote will allow me to continue to champion adult education not only at the state level, but also nationally.*

*“Education lasts a lifetime”*

*I would appreciate your vote for me as your next COABE Vice-President in charge of membership. Hope to see you in Baltimore from August 16th to 19th.*

Sincerely,

Debbie Faibus-Kendrick, Ed.D.

**Dr. Debbie Faibus-Kendrick**



Dr. Debbie Faibus-Kendrick has been an educator for 39 years and Director of the Crawford County Adult Education Center for 10 years. Faibus-Kendrick earned her Ed.D. from the University of Arkansas. She served as president and vice president of the Arkansas Association of Continuing and Adult Education (AACAE), president of the Arkansas Association of Adult Education Administrators, and secretary of the Arkansas Adult Education Advisory Council. She is the legislative chairperson for Arkansas Adult Education, Adult Education Representative for the local workforce board, and Northwest Representative for the Arkansas Adult Education Advisory Council. She was named 2014 AACAE Outstanding Administrator of the Year. Her community activities include Drug Court Council, Court Appointed Special Advocates (CASA), Boys and Girls Club Board, Comprehensive Juvenile Services Board, and Head Start Policy Council and Board. Faibus-Kendrick has been a COABE member for 12 years. She was elected COABE secretary, was appointed as COABE Region 6 representative, and vice president in charge of membership.

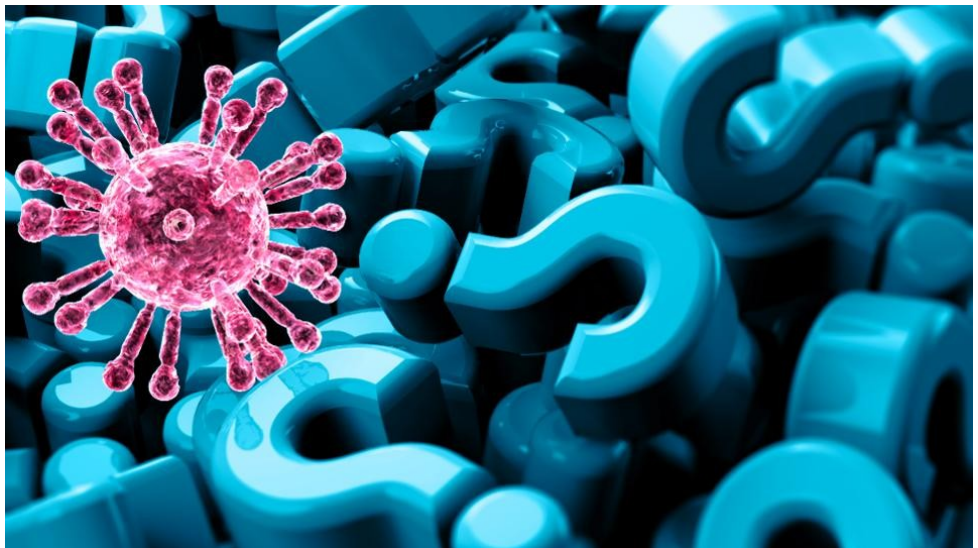


## *Coronavirus and the Impact on Persons with Barriers*

We all have been impacted by the effects of the widespread Coronavirus. Whatever our biggest concern was two weeks ago, or even last week, has dramatically changed as we navigate this unforgiving pandemic. Many uncertainties lie ahead, which bring my thoughts to our brothers and sisters with disabilities: physical, emotional and learning.

The Department of Education in conjunction with the Centers for Medicare and Medicaid Services issued a Q & A document to assist serving individuals with disabilities, available at <https://www.cms.gov/CCIIO/Resources/Fact-Sheets-and-FAQs/Downloads/EHB-Benchmark-Coverage-of-COVID-19.pdf>

Notable information can be found within the briefing, such as what is covered and vaccine coverage. According to the IDEA and ADA, there is no stated provision on what schools and universities are to do in cases of prolonged closures. Prolonged closures stated involve ten days; however, more than ten are not specifically addressed. There is the expectation that schools should attempt to offer the same level of support as they would to virtual students throughout the school year. Schools are required to support students (under IDEA) if the student is out for an extended period of time; the responsibilities of the reverse are yet to be defined.



As instructors, we should remember that we serve in many capacities in the classroom. We often think of how we will put things back together and move forward - and if we think about it - educators bear the responsibility of using knowledge to piece things together and moving forward. As we now stand with all Arkansas school districts closed and over 10,600 schools nationwide closed, we can't help but think about how this will impact the learning of our students.

The US Department of Education has been under pressure to issue guidance according to the law on how to handle students with disabilities before issuing a statement and guidelines. An important information fact sheet can be found at

<https://www.ed.gov/news/press-releases/us-department-education-releases-webinar-fact-sheet-protecting-students-civil-rights-during-covid-19-response>

We also have to remember that all persons with disabilities have a variety of barriers. This includes medical barriers. Our state agencies have come together to issue guidance and support on these circumstances. The Centers for Medicare and Medicaid Services have also issued outlines on options state Medicaid agencies have which can be found here:

<https://www.medicaid.gov/state-resource-center/downloads/covid-19-faqs.pdf>

*Man Turns Life Around Through Jail Program*

*By Ty Thompson, Press-Argus-Courier  
Provided from Crawford County Adult Education*

Jakob Holtschulte made a better life for himself after spending time in jail.

He was born and raised in Bakersfield, Calif., and after graduating high school he discovered drugs. Holtschulte eventually decided that he needed to get away from that lifestyle and decided that he would join the Navy. Unfortunately, he was kicked out after three years for smoking marijuana.



After being kicked out of the military, Holtschulte was in and out of jobs.

“I couldn’t get my stuff straight,” he said, but an opportunity came up that would give him a place to stay and a job.

Holtschulte's cousin in Florida was prepared to help him get back on his feet. On his way to Florida, Hurricane Irma made landfall and prevented him from getting the job. Luckily, he had another cousin on the way that he could work with. Holtschulte made a stop in Van Buren and began working and living. This became his new home, but things weren’t getting better for him.

“I got involved with a girl that was bad news,” Holtschulte said. A fight broke out with his girlfriend that led to him being arrested. He was given a six month sentence in the county jail and a six-year suspended sentence.

“When I went to Crawford County, after about two weeks, I was given a trustee position where I could work for the jail.” he said.

Holtschulte began to work for the jail in a cleaning position. In his trustee status he was also allowed to take part in the CRC program offered by the jail. This is a class that prepares inmates for a career path after they are released. The only inmates involved in the course were Holtschulte and one other. He mentioned that no one had a real interest in taking that course, but he had lots of free time on his hands. He attended the classes Monday through Thursday until he finally had to take the test to receive his career readiness certificate (CRC).

*AALRC  
Professional  
Development  
Team*

*Bridget Criner*

*Nancy  
Leonhardt*

*Nancy Loftis*

*Dr. Trenia Miles*

*Bill Ritter*

*Marsha Taylor*

*Continued from page 6*

The Adult Education Center in Crawford County offers a CRC course that tests students on applied math, workplace documents, and graphic literacy to verify that the individual has essential employability skills. Holtschulte earned his CRC at the gold level, which is one of the highest levels that a student can receive. This class also lessens or removes steep fines, community service, or jail time for inmates.

"It turns out that I was a lot smarter than I thought I was. I was way better at math, way better at reading comprehension and interpreting graphs. Things like that," he said.

He was then given the opportunity to think about where he would want to work. Being a felon, he didn't think that he would be able to work.

"You don't expect you're going to get a break once you've been in jail and pretty much lose everything," he said.

Finally, his break came. Because of the work that he did for the jail, he was released two months early. One week later he was working for Pepper Source in Van Buren.



"He's a great guy and a good person," Vice President of Operations Jay White said. "I'm familiar with the contents of the program, and I see how it impacts our employees."

Holtschulte is currently a "backup lead," which he related to being like an assistant manager, at Pepper Source for the production room making 8,000-pound batches of sauce at a time.

He began working in early July and since then has been promoted once and given three raises.

"Everything is going pretty well for me," Holtschulte said. "Actually, I'm probably doing better than I ever did before."

"He's definitely a success story," White added.

The CRC program has served over 800 inmates in Crawford County. The county spends roughly \$52 per day for every inmate that is housed in the Crawford County Justice Center. The Alternative Sentencing Program has saved Crawford County almost \$1 million.

## *AALRC Staff*

*Director*  
*Marsha Taylor*

-----  
*Disabilities and  
Online Learning  
Coordinator*  
*Wendy Bryant*

*Receptionist*  
*Michara Hadley*

*Professional  
Development  
Coordinator*  
*Nancy Loftis*

*Media  
Coordinator*  
*Klaus Neu*

*Administrative  
Assistant*  
*Toccarra Pearson*

*Information  
Technology  
Specialist*  
*Rob Pollan*

Tech



Talk

**Note:** To link to any web address (URL) in this newsletter, go to the AALRC's home page at <http://aalrc.org>, look up this newsletter, and then just click on the appropriate link.

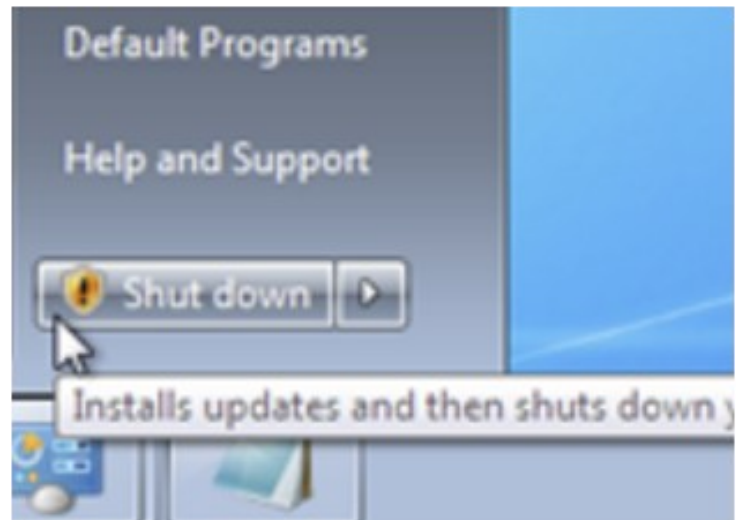
## Windows 7/8 Free Update to Windows 10



If you are still using Windows 7 it is past time to upgrade to Windows 10. And why not, it's free? There are many good reasons that we discussed in the last newsletter (check out the [Winter 2019 Newsletter](#)) and this is a follow-up to help you make that happen. Just be sure to backup any important documents before starting.

The main problems I ran into while upgrading to Windows 10 is the computer needed to be updated and the anti-virus needed to be disabled or uninstalled before starting the installation.

Updates - Most of the time I could just click on the Start button and if there was a warning symbol next to the Shut down button, I would just shut down and let the update install, then after shut down I would restart it and wait awhile to see if more updates showed up next to Shut down button, and then repeat the process. This just made it easier when doing multiple machines, but if you want to manually update, just click the Start button and type in Windows Update in the search box and update your computer. You may get more updates than needed that way, but you can be sure it is totally updated.



Antivirus – you can disable some antivirus programs by right-clicking its icon in the bottom-right corner next to the clock, but it's probably best to uninstall it. To uninstall your antivirus, click Start, then click Control Panel, then under Programs, click uninstall a program, find your anti-virus in the list of programs and uninstall it. Make sure you reboot after the anti-virus uninstalls.

Download Windows 10 Installation Media – go here <https://www.microsoft.com/en-us/software-download/windows10> and click on Download Tool Now. When asked to Upgrade This Computer or Make Installation Media, click Upgrade This Computer. It will take quite awhile to install and it will reboot a couple of times, but that's all there is to it. Contact Rob Pollan [rob@aalrc.org](mailto:rob@aalrc.org) if you have any questions and good luck updating.

## *TABE 11&12 Certification Process*

TABE 11&12 Certification is an optional free online training for programs interested in having their staff certified as TABE Test Administrators. TABE Certification consists of two unique, hour-long presentations, each of which is followed by a 30-item test. Upon successfully completing the training and passing the tests, participants will be certified to handle, score, and proctor TABE 11&12 tests. Participants can elect to print their Certificate of Completion, save it for later use, or have it emailed to them.



### **Upon completion certificate holders can:**

- Understand and follow general TABE 11&12 test best practices
- Implement correct forms and levels
- Securely administer and handle test resources
- Follow student privacy protocols

To access the Training modules please click on the below separate links.

[https://www.brainshark.com/drc/TABE11\\_12CertificationPartI](https://www.brainshark.com/drc/TABE11_12CertificationPartI)

[https://www.brainshark.com/drc/TABE11\\_12CertificationPartII](https://www.brainshark.com/drc/TABE11_12CertificationPartII)

Password for both parts: tabecertdrc

Note that Part 1 and Part 2 have separate links.

Certification candidates must complete both training modules in their entirety in order for the certificate to generate.

Listed below you will find a full information brochure for the TABE Certification and a FAQ document. States or local programs may choose to post these links to internal Professional Development sites.

For more information visit [www.TABETest.com](http://www.TABETest.com) or call 800.538.9547

## *ALA's Mid-Year Review*



March 5th, 6th, and 9th, literacy council directors and AmeriCorps members met for mid-year meetings in Batesville (Ozark Foothills Literacy Project), Fayetteville (Ozark Literacy Council), and Little Rock (ALA). Council Directors reviewed the FY21 Grants and Aid to Councils application, due March 30th. They also discussed topics for the May 14-15 Annual Conference in Little Rock, and shared upcoming

events. AmeriCorps members shared their goals for the year, participated in a mid-year service survey, and learned a little more about themselves through the True Colors personality test. Each group appreciates the time to get together and share with their peers.

