

GED Accommodations

October 24, 2024
AACAE Conference Arkansas

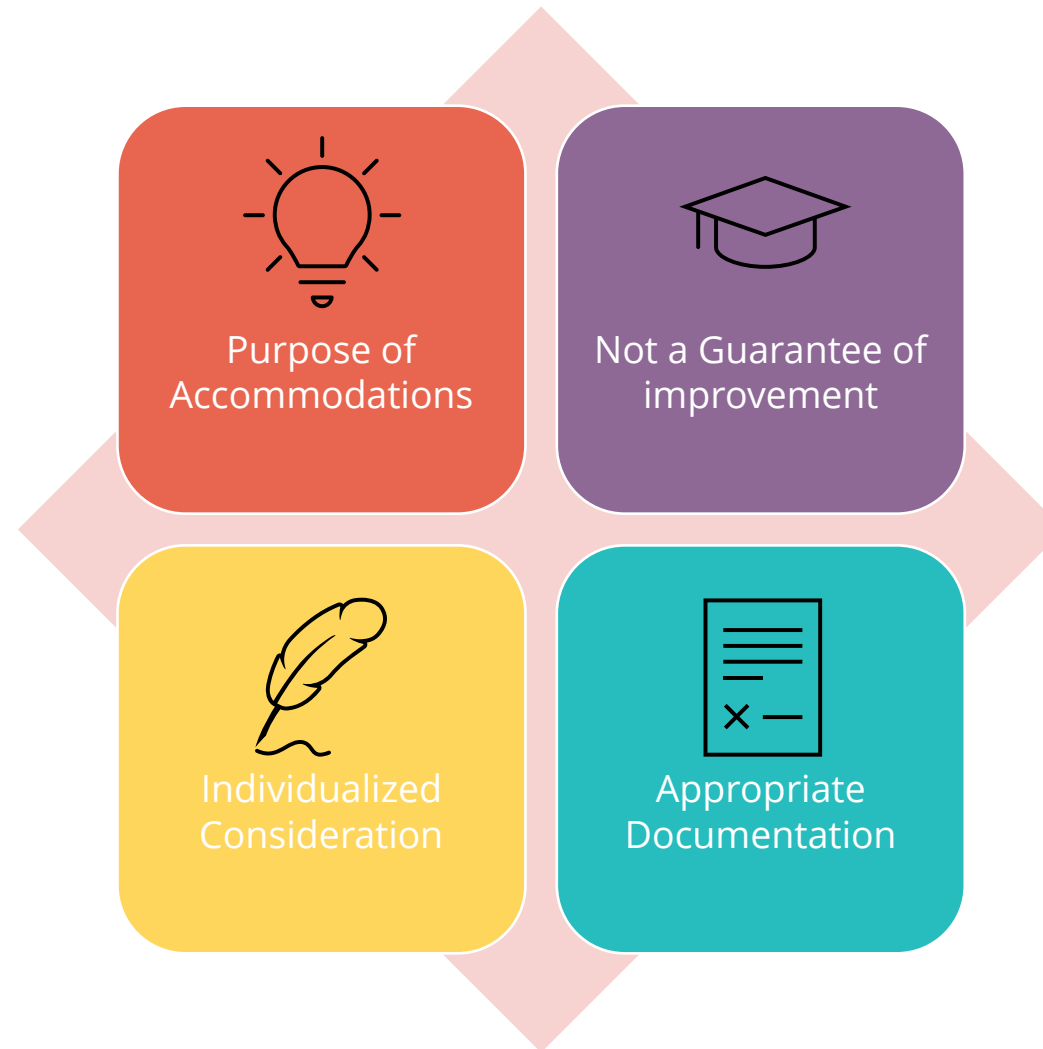


Agenda

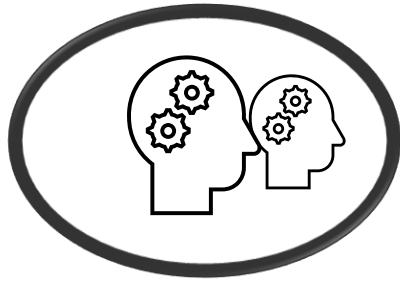
- Overview
- Disability categories
- Accommodation process
- Documentation requirements
- Best way to assist
- Questions



Accommodations Overview

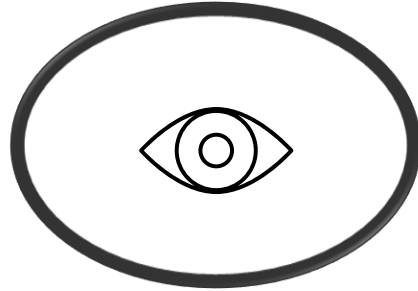


Categories of Disabilities



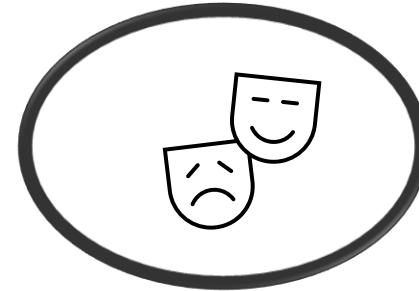
**Learning and Other
Cognitive Disabilities**

**Documentation within the
last 5 years**



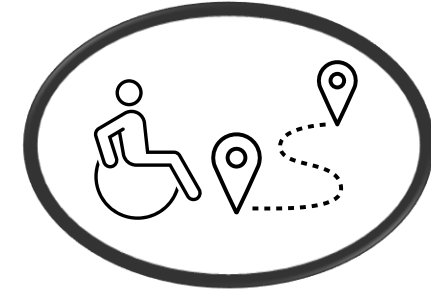
**Attention Deficit
Hyperactivity Disorder**

**Documentation within the
last 5 years**



**Psychological and
Psychiatric Disorders**

**Documentation within the
last 1 year**



**Physical Disorders and
Chronic Health
Conditions**

**Documentation within the
last 1 year**

Requesting Accommodations

Create an account at GED.com

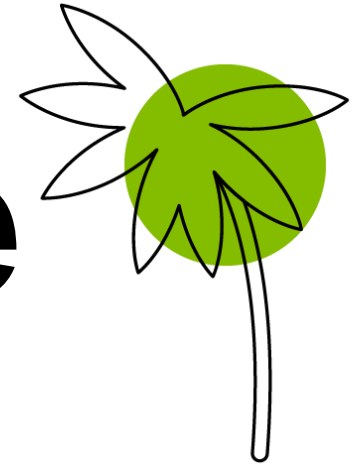
Click yes to the question about accommodations (modified testing)

Create an account in the GED Accommodations Request System

Only click the activation link once

Contact accommodations@ged.com with questions/concerns

Important Update



Effective August 1, 2023, accommodation approvals will be valid for 2 years.

(some exceptions apply)

What is NOT considered a disability?

ESL (English as Second Language)

“Slow Learner”

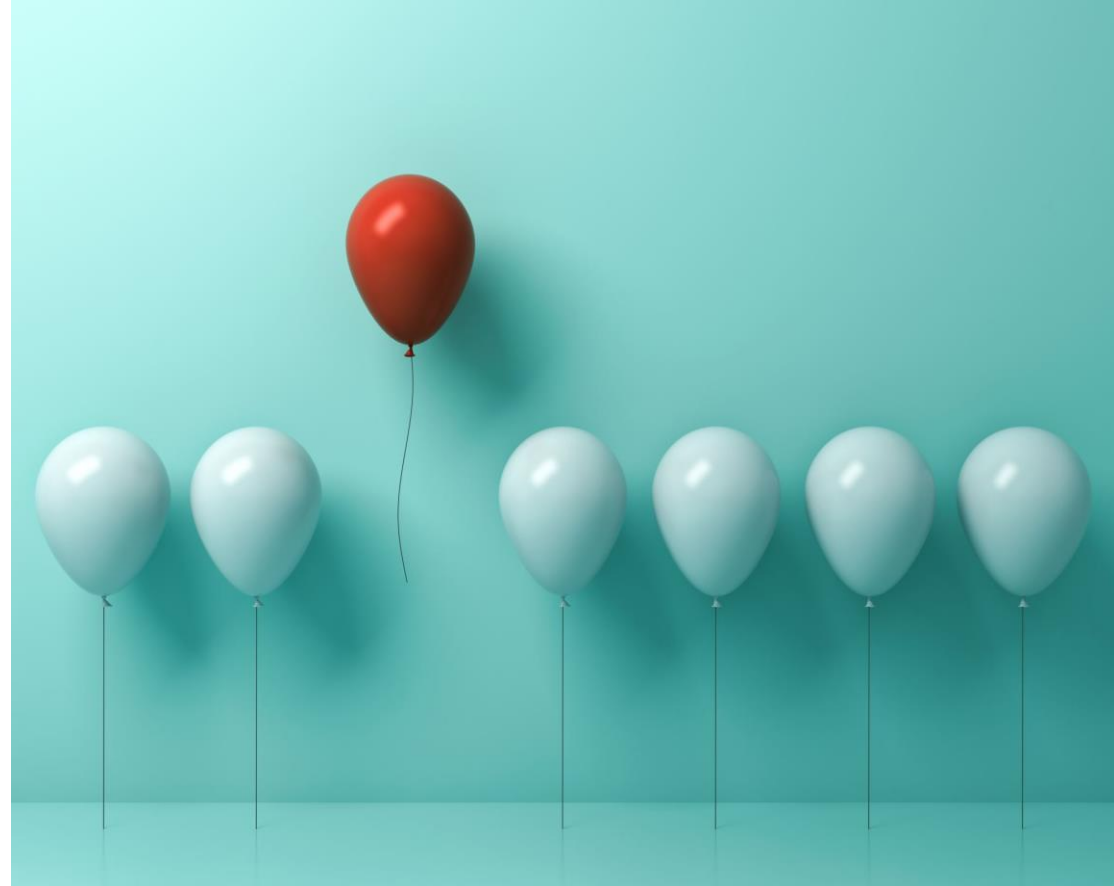
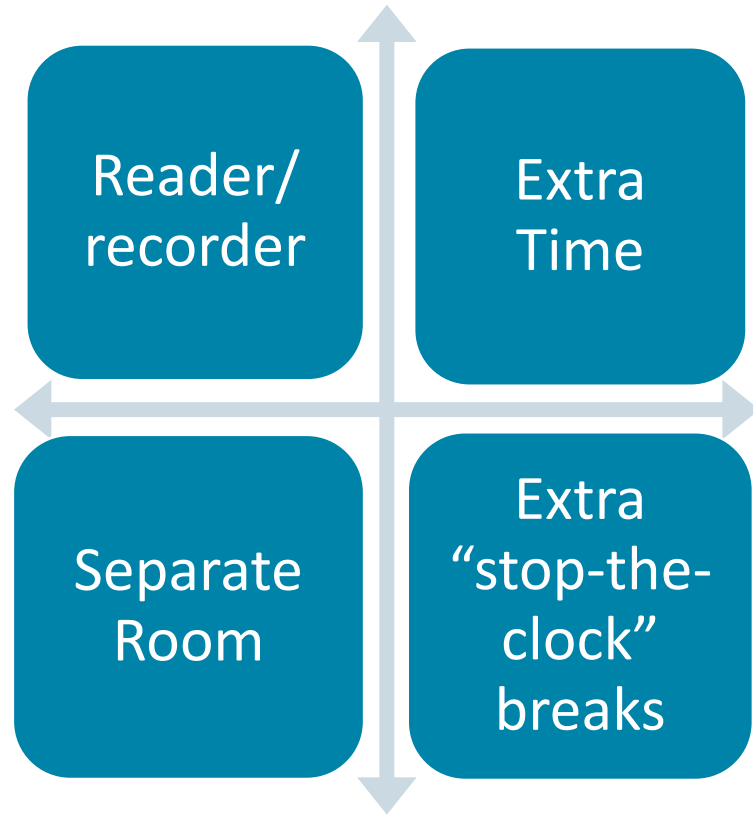
Active substance abuser

Test Anxiety



Homemade diagnoses

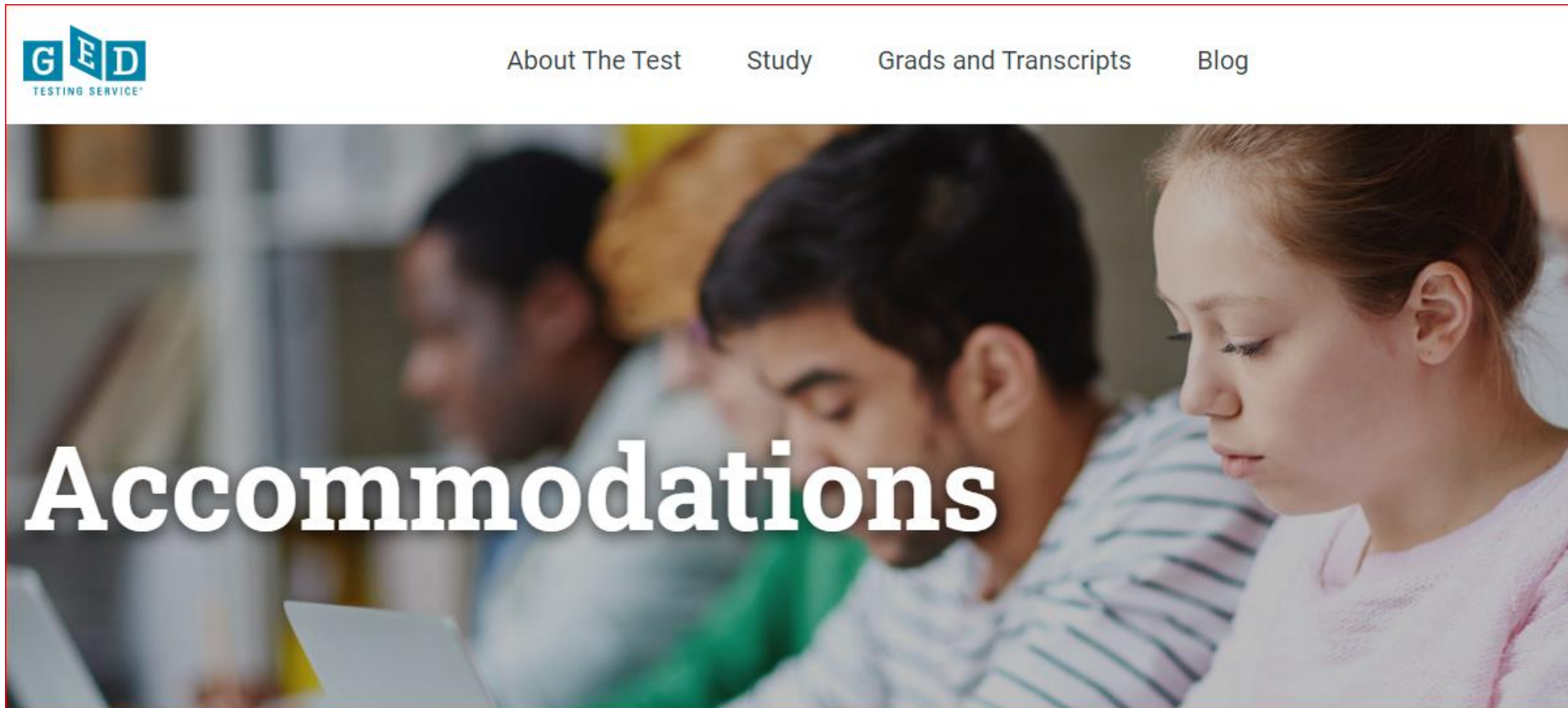
Commonly Requested Accommodations



Documentation Guidelines

Review documentation guidelines:

https://ged.com/about_test/accommodations/



Accommodation Request Volume – Arkansas

Year	Total Requests	Approved/Partial Approval	Incomplete	Denied
2024 Jan-Sept	66	55	11	0
2023	73	56	17	0
2022	72	58	14	0



Accommodation System Features

Online Request System

Candidates request accommodations online. Starts with them clicking “yes” to the accommodation question on GED.com

Web Scheduling

Candidates with approvals of extra time, breaks and other things that do not require manual intervention are directed to schedule online.

Assistive Technology

Universal Access
features



Adaptive
equipment



Magnification



JAWS



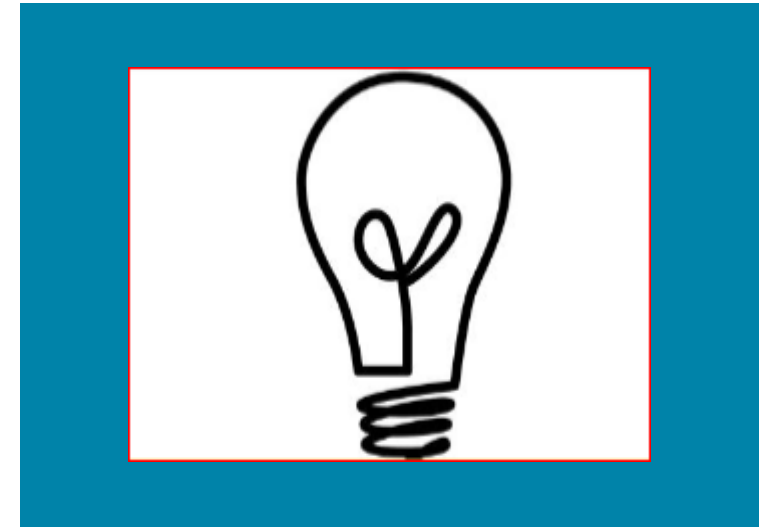
Emerging Trends in Accommodations and Accessibility



Accommodation vs
Fundamental Alteration



Accommodations vs
Security



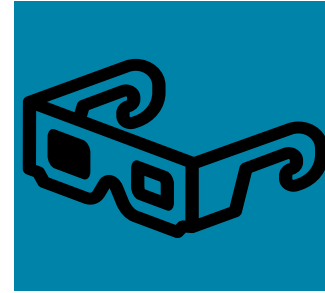
Non-standard requests

Accommodation Review Process

- Who reviews requests?
- How are determinations made?
 - Consider all documentation
 - Continual calibration
 - Written explanations



Outer Limits of Accommodations

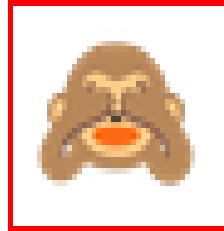


Unlimited time



The accommodation cannot be so extreme that test validity is compromised

Waiving a portion of the test



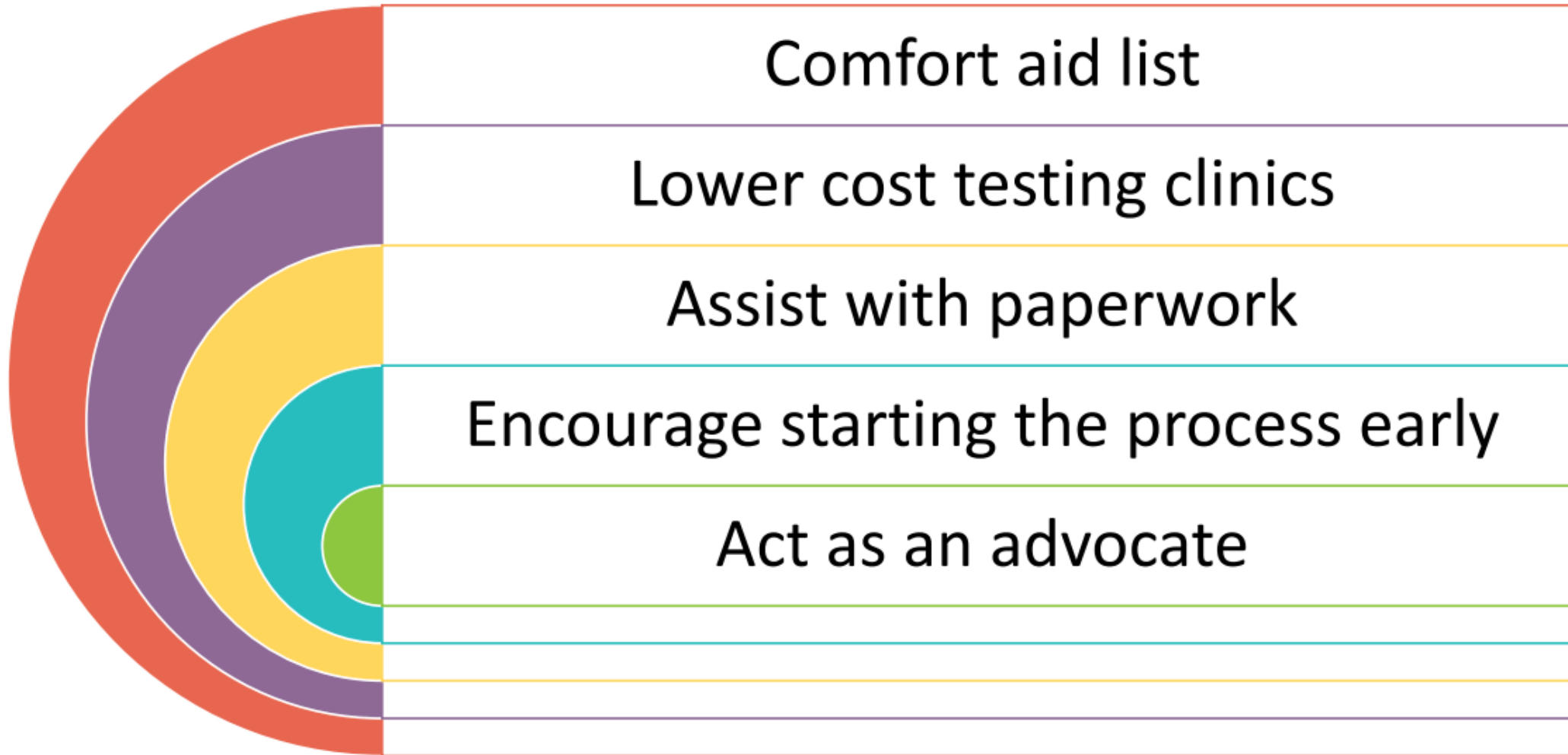
The accommodation cannot fundamentally alter the test's purpose

Administer medical care



The accommodation cannot jeopardize test security or the safety of staff/others

How can you help your students?



Resources on the Accommodation Page

- [Frequently Asked Questions](#)
- [Lower-cost Testing Clinics in the United States](#)
- [Personal Items and Minor Modifications](#)

Questions? Email accommodations@GED.com



Scheduling Information

- The determination letter will have scheduling instructions
- Separate room approvals require a call back
- Approvals of reader and recorder require 8 business day lead and a call back
- If there is no answer when the agent calls back and they are unable to leave a message, an email will be sent to the candidate's email
- If the advocate should receive the call back, tell the scheduling agent the name and phone number to call
- If a message is left with an appointment offer, it is only for 2 days. After the two days, the candidate must call again
- Candidates and advocates should not call test centers directly

Questions



Contact Information

Debbie Bergtholdt

Manager, Accommodations

accommodations@ged.com

